

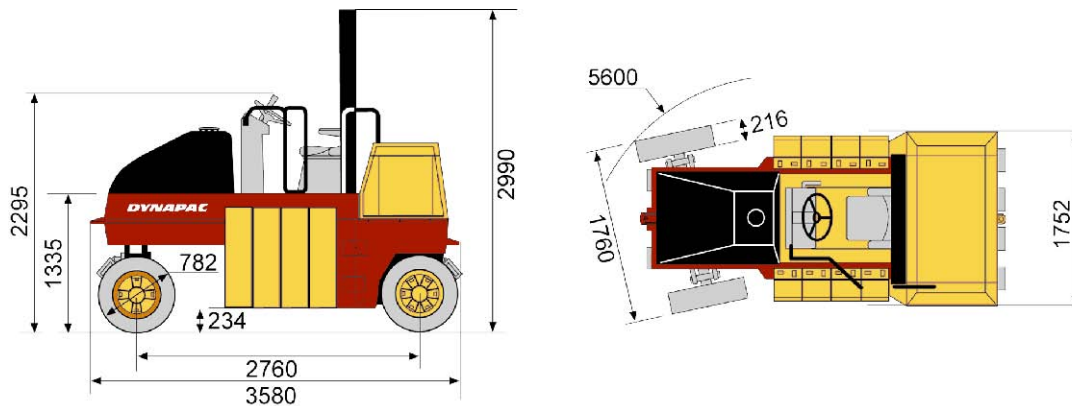
DYNAPAC

Part of the Atlas Copco Group
Pneumatic rollers

CP142



Technical data



Operating mass (incl. ROPS) with 2 ballast boxes	Operating mass (incl. ROPS) Masses	8,000 kg	6,000 kg	CP142
Operating mass (incl. ROPS) with 4 ballast boxes			10,000 kg	
Operating mass (incl. ROPS) with 6 ballast boxes			12,000 kg	
Operating mass (incl. ROPS) with 8 ballast boxes (option)	Compaction		14,000 kg	
Tyre overlap	Rolling width	12 mm	1,760 mm	
Wheel loads, without ballast			670 kg	
Wheel loads, with 2 ballast boxes			890 kg	
Wheel loads, with 4 ballast boxes			1,110 kg	
Wheel loads, with 6 ballast boxes			1,330 kg	
Wheel loads, with 8 ballast boxes (option)			1,560 kg	
Tyre type (smooth)			7.50-15, 14 ply	
Number of tyres			5 front, 4 rear	
Wheel oscillation (°)			±3	
Water spray system, type			Pressurized, electric pump	
Water spray system, tank capacity			500 l	
Water spray system, spray nozzle	Traction		one per tyre	
Speed low	Transmission	10 km/ h	Hydrostatic, direct drive motors at rear tyres	
Speed high			19 km/ h	

Theor. gradeability Engine

31 %

Model Manufacturer

QSB 3.3 Cummins

Type

Water cooled turbo Diesel with After Cooler

Fuel tank capacity

140 l

Rated power

99 hp

Rated power

74 kW

Rated power @

2,200 rpm

Rated power (rating standard)

SAE J1995

Electrical system Service brake Parking/ Emergency brake Hydraulic system

12 V Hydros. braking on drive wheels (rear) Spring - applied on drive wheels (rear)

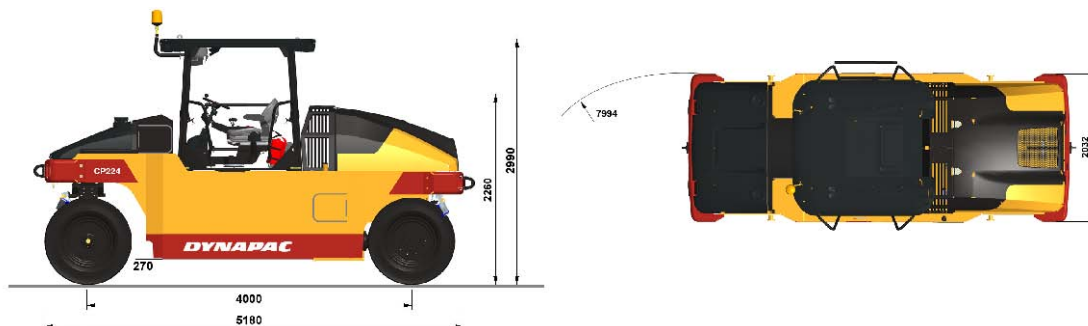
DYNAPAC

Part of the Atlas Copco Group
Pneumatic rollers

CP224



Technical data



Masses CP224

Operating mass (incl. ROPS)

Mass with wet sand ballast

Mass with max. ballast

Compaction

Rolling width

Tyre overlap

Wheel loads, without ballast

Wheel loads, with wet sand ballast

Wheel loads, with max. ballast

Tyre pressure, min

Tyre pressure, max

9,450 kg

14,150 kg

21,000 kg

1,800 mm

42 mm

1,380 kg

2,080 kg

3,000 kg

250 kPa

850 kPa

Tyre type (smooth)
 Water spray system, type
 Water spray system, tank capacity
 Water spray system, spray nozzle
 Ballast volume
 Traction
 Speed low
 Speed high
 Speed high (EEC countries)
 Engine
 Manufacturer
 Model
 Type
 Fuel tank capacity
 Rated power
 Rated power
 Rated power @
 Rated power (rating standard)
 Electrical system
 Hydraulic system
 Driving

Steering
 Service brake
 Parking/ Emergency brake

13/80 R20
 Pressurized
 415 l
 one per tyre
 2.20 m³

9 km/h
 23 km/h
 20 km/h

Cummins
 QSB 3.3 T3
 Water cooled turbo Diesel with After Cooler
 210 l
 99 hp
 74 kW
 2,200 rpm
 SAE J1995
 24V

Axial piston pump with variable displacement.
 Axial piston motors (2) with variable displacement.
 Axial piston pump with variable displacement.
 2 multidisc brakes on rear wheels activated by pedal.
 Failsafe multidisc brakes in both gear boxes.

DYNAPAC

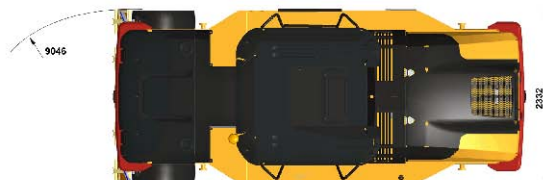
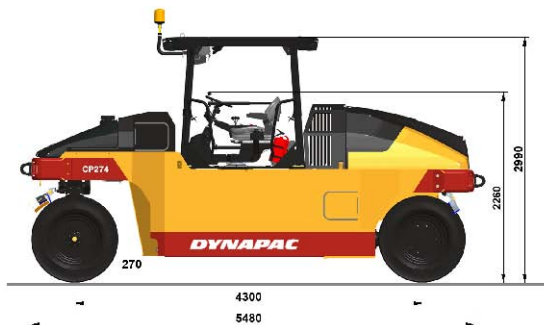
Part of the Atlas Copco Group

CP274

Pneumatic rollers



Technical data



Masses CP274
 Operating mass (incl. ROPS)
 Mass with wet sand ballast
 Mass with max. ballast

10,800 kg
 17,000 kg
 27,000 kg

Compaction	
Rolling width	2,300 mm
Tyre overlap	42 mm
Wheel loads, without ballast	1,200 kg
Wheel loads, with wet sand ballast	1,900 kg
Wheel loads, with max. ballast	3,000 kg
Tyre pressure, min	250 kPa
Tyre pressure, max	350 kPa
Tyre type (smooth)	13/80 R20
Water spray system, type	Pressurized
Water spray system, tank capacity	415 l
Water spray system, spray nozzle	one per tyre
Ballast volume	3 m ³
Traction	
Speed low	7 km/ h
Speed high	23 km/ h
Speed high (EEC countries)	20 km/ h
Engine	
Manufacturer/ Model	Cummins QSB 4.5 T3
Type	Water cooled turbo Diesel with After Cooler
Rated power, SAE J1995	82 kW (110 hp) @ 2,200 rpm
Fuel tank capacity	210 l
Electrical system	24V
Hydraulic system	
Driving	Axial piston pump with variable displacement.
	Axial piston motors (2) with variable displacement.
Steering	Axial piston pump with variable displacement.
Service brake	2 multidisc brakes on rear wheels activated by pedal.
Parking/ Emergency brake	Failsafe multidisc brakes in both gear boxes.